

## Repair instruction

**Description:** SC250/400 Vent button

**Part number:** 0752492/3230716

Look for Service Centres, Point of Sale addresses and other information on: [www.thetford-europe.com](http://www.thetford-europe.com)

**Version:**

1

**Date:**

April 2010

**Tools required:**

-

**A**

Using the sliding cover as a lever rotate the complete mechanism anti clockwise until the arrow points to the second dot.



**B**

Take complete mechanism out.



**C**

While pressing with your thumb the button in, pull on the inside the seal retainer loose.



D

Take new seal retainer and place it through the hole where the button needs to be pressed in.



E

Press button with spring back into position.



F

Place mechanism and use sliding cover in reverse to position back into the tank.



## Repair instruction

**Description:** SC400 Holdingtank mechanism R/L

**Part number:** 3233106/3233206

**Look for Service Centres, Point of Sale addresses and other information on:** [www.thetford-europe.com](http://www.thetford-europe.com)

<b>Version:</b>	1
<b>Date:</b>	April 2010
<b>Tools required:</b>	-

**A**

Using the sliding cover as a lever rotate the complete mechanism anti clockwise until the arrow points to the second dot



**B**

Take complete mechanism out and replace it by the new one.



**C**

Place new mechanism and use sliding cover in reverse to position back into the tank.



Note: a new sliding cover is not included in the package.

## Repair instruction

**Description:** SC400/C500 Shaft

**Part number:** 51802

Look for Service Centres, Point of Sale addresses and other information on: [www.thetford-europe.com](http://www.thetford-europe.com)

<b>Version:</b>	1
<b>Date:</b>	June 2010
<b>Tools required:</b>	Philips screwdriver

**A**

Remove waste-holding tank out of Cassette toilet and pull handle from control panel.



**B**

Pull control panel loose.



**C**

Swing waterfill funnel out.





D

Look up inside the toilet where you will find the pivot of the shaft, is held by 3 screws. Remove spring from shaft.



E

Remove 3 screws from pivoting bracket, and remove bracket.



F

Remove link from shaft, and take shaft out of.



Follow steps in reverse to place new shaft.

## Repair instruction

**Description:** Control knob C500

**Part number:** 90701

Look for Service Centres, Point of Sale addresses and other information on: [www.thetford-europe.eu](http://www.thetford-europe.eu)

**Version:**

**Date:**

March 2010

**Tools required:**

Pliers

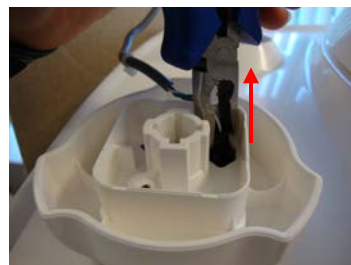
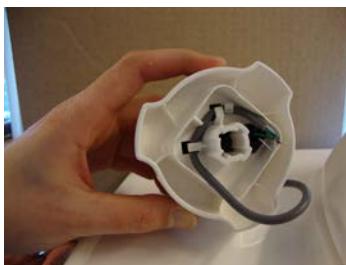
**A**

Pull control knob off.



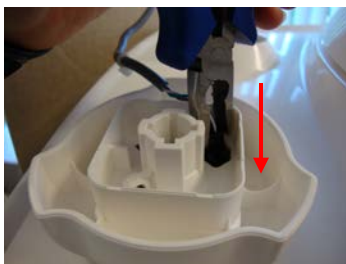
**B**

Free cable and remove plug using pliers.



**C**

Fit plug onto new control knob.



**D**

Refit control knob.



## Repair instruction

**Description:** Drain tube C500

**Part number:** 90703

Look for Service Centres, Point of Sale addresses and other information on: [www.thetford-europe.eu](http://www.thetford-europe.eu)

**Version:**

**Date:**

March 2010

**Tools required:**

Philips Screwdriver

**A**

Remove waste-holding tank out of the Cassette toilet. Pull the sight glass away from the black rubber pipe. Note: make sure that the water tank is empty.



Unscrew the tunnel on the side where the drain tube is located (2 screws).

If necessary replace the sight glassclip by turning it and pulling outwards.



**B**

Press the unscrewed tunnel a bit to the left so the drain tube can be taken out.



C

Push new sight tube in  
Cassette toilet and, place  
sight glass back onto black  
pipe.



D

Screw tunnel back into place.





## Repair instruction

**Description: PCB C500**

**Part number: 90704**

Look for Service Centres, Point of Sale addresses and other information on:  
[www.thetford-europe.eu](http://www.thetford-europe.eu)

**Version:**

**Date:**

March 2010

**Tools required**

-

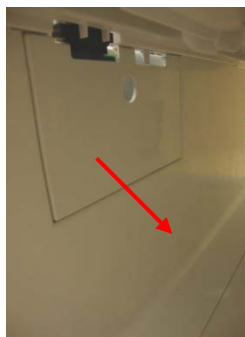
**A**

Pull the Waste holding tank out of the cassette



**B**

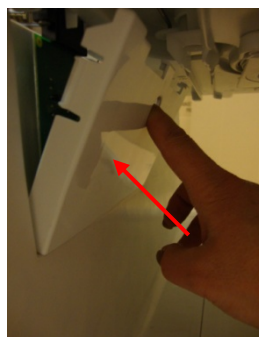
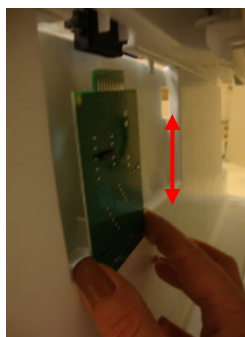
Remove the PCB cover on the inside



**C**

Pull PCB out and replace with new one

Place PCB cover back into position and press it back in place



Note: Be careful when handling the PCB

## Repair instruction

**Description:** Float arm C500

**Part number:** 90706

Look for Service Centres, Point of Sale addresses and other information on: [www.thetford-europe.eu](http://www.thetford-europe.eu)

**Version:**

**Date:**

March 2010

**Tools required:**

Flat screwdriver

A

While looking down on the top of the tank you will notice the sliding cover. Using the sliding cover as a lever, rotate the complete mechanism anti clockwise until the arrow points to the second dot.



The complete disc and mechanism can now be removed.

B

The float is now easily visible. Take float arm out of retainer.



Place flat screwdriver between rib and retainer and take it out



C

Press new float arm into position.



D

Reverse the process to replace the mechanism.

## Repair instruction

**Description: C502 Pump**

**Part number: 90714**

Look for Service Centres, Point of Sale addresses and other information on: [www.thetford.eu](http://www.thetford.eu)

**Version:**

**Date:**

April 2012

**Tools required:**

Crosshead screwdriver

**A**

Remove waste-holding tank out of the Cassette toilet



**B**

Push seat & cover to the right, hold this position while pulling the right side, removing the seat & cover from the toilet. Then remove two screws on the side.



**C**

Looking into the toilet remove 2 screws on the flange lock. By turning the flange lock it can be taken off.



**D**

Remove flange lock so that complete toilet bowl can be taken out.



**E**

While removing the toilet bowl, the nozzle is still in position. Click nozzle loose by pulling downwards.



F

Disconnect connectors in the back of the toilet.



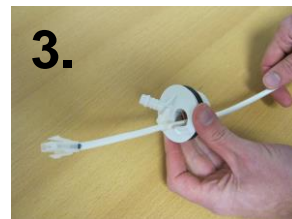
G

Looking from the top, turn the bayonet to the right (note: this is the opposite way towards the arrow is pointed). Take pump out.



H

Remove tube from bayonet (1), push grommet through bayonet (2), remove bayonet from wire (3) and remove tube from pump (4).



I

Follow instructions in reverse to assemble the new pump.



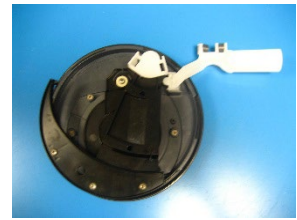
## Repair instruction

Toilets  
Cassette Toilets  
C400/C500

### SC lipseal 23721

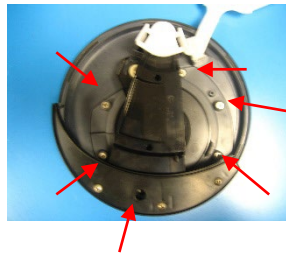
A

Remove the holdingtankplate by turning it from the closed circle to the open circle on the holdingtank(45°)



B

Make sure the blade arm driver is in this position (picture)  
Then unscrew the 6 screws



C

Remove the lipseal



D

After replacing the seal, follow instruction B-A. to complete the holdingtank  
Note: make sure you screw crosswise for the best result(B)

