

## Troubleshooting

### TOILETS

### CASSETTE TOILETS

### C500

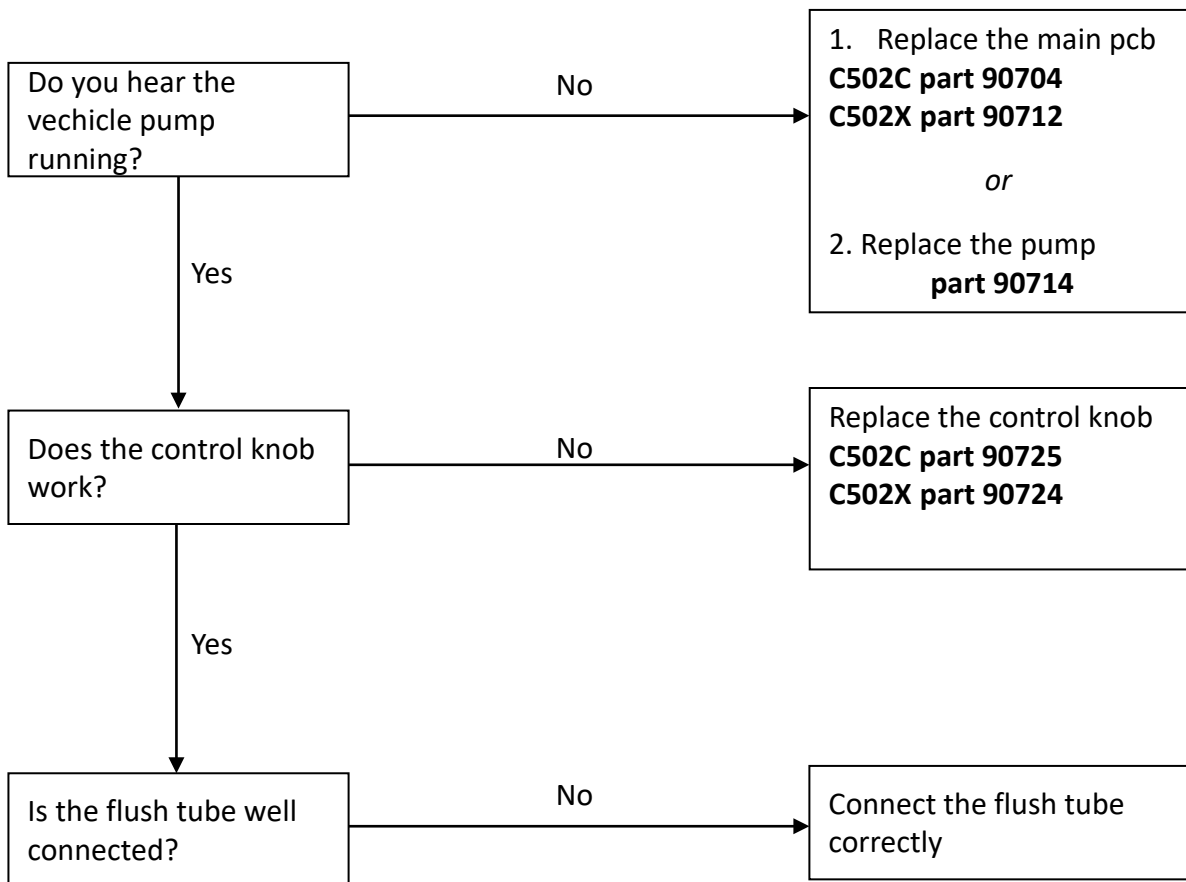
## No flush C502C/X



*Before starting:*

*Check if toilet is connected correctly*

*(see 12V connection scheme in installation manual)*



## Troubleshooting

### TOILETS

### CASSETTE TOILETS

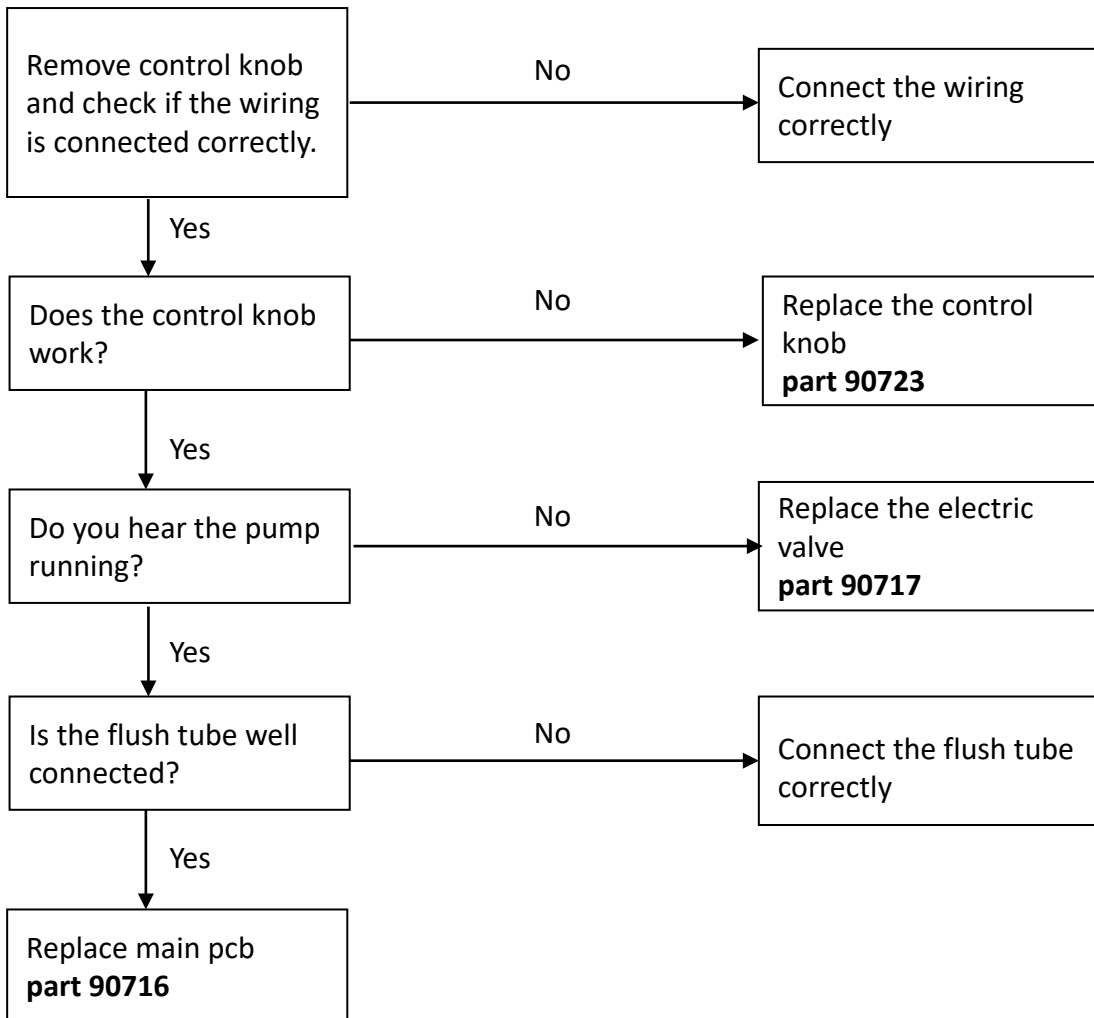
### C500

## No flush C503L



*Before starting:*

1. Check if the toilet is connected correctly  
(see 12v connection scheme in installation manual)
2. Check if there is water supply
3. Check if the water pump of the vehicle works properly



## Troubleshooting

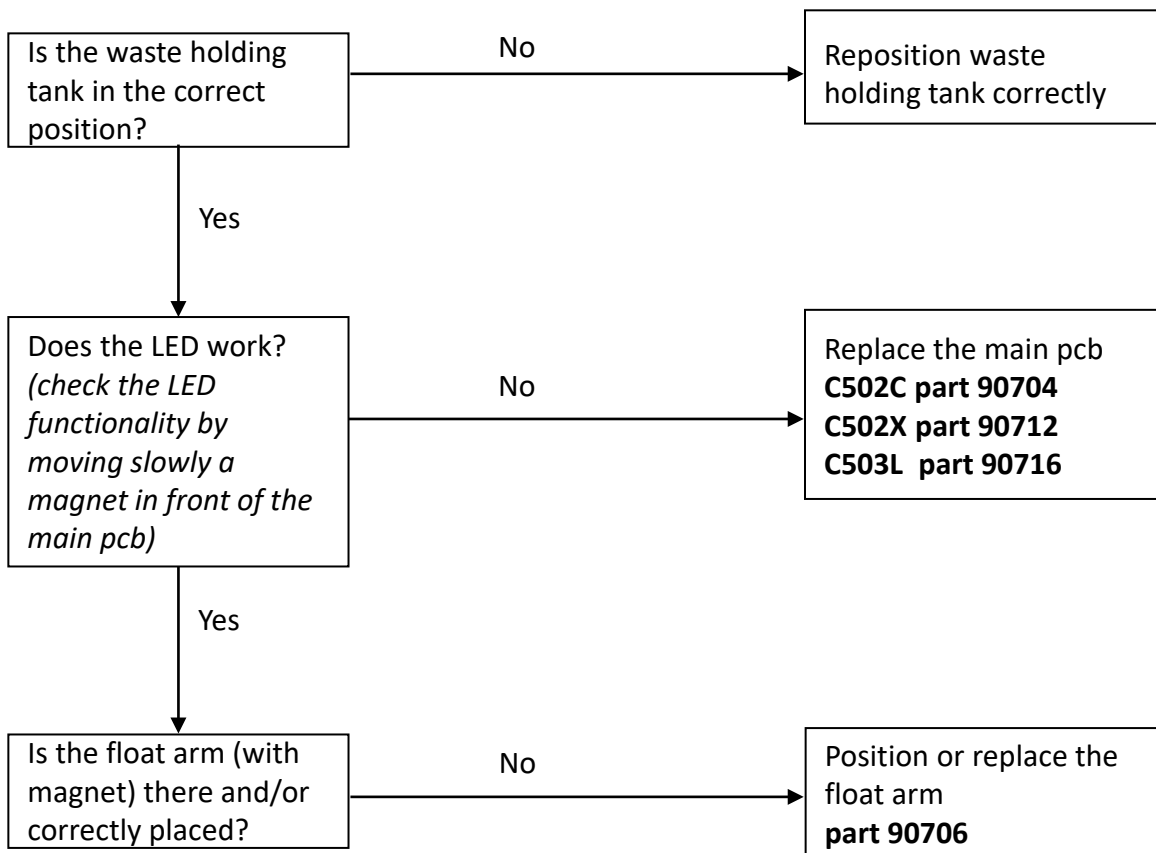
### TOILETS

#### CASSETTE TOILETS

#### C500 waste holding tank

### No level indication of the waste holding tank

---

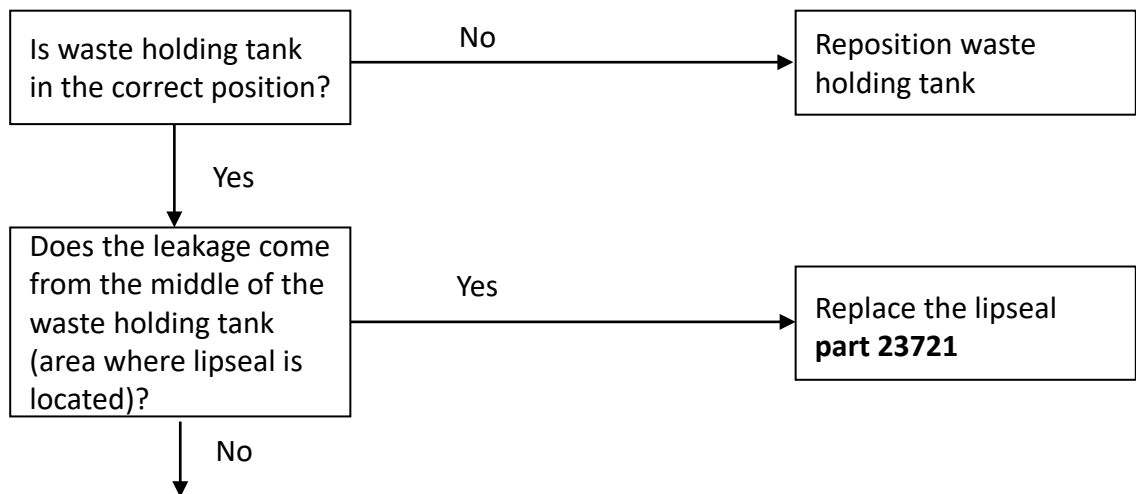


## Troubleshooting TOILETS CASSETTE TOILETS C500

### Leakage – 1/2

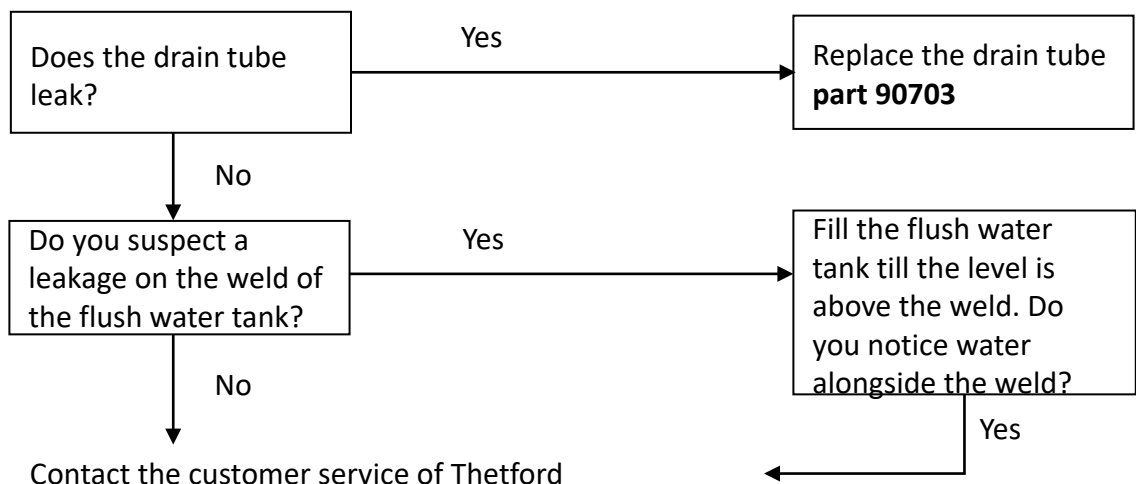
---

#### *A. Leakage between the toilet bowl and waste holding tank*



Contact the customer service of Thetford

#### *B. Leakage from flush water tank (models C502-C/X)*



## Troubleshooting

### TOILETS

### CASSETTE TOILETS

### C500

## Leakage - 2/2

---

### C. Leakage from waste holding tank



*Before starting:*

1. Fill waste holding tank fully and plate it on one side (small side)
2. Remove the sliding cover
3. Check where water is coming from

### C1. Leakage from the vent button

Replace the vent button  
**part 3230716**

### C2. Leakage at the pour out spout

Replace the pour out  
spout  
**part 3230606**

### C3. Leakage at the automatic vent

