

Repair instruction

Refrigeration
Absorption Refrigerators
N3000 Series

SR Battery pack 69022507/69022527

A

Remove the batteryhatch (dummy)



B

Remove the sticker with a small flat screwdriver



C

Unscrew the control panel



D

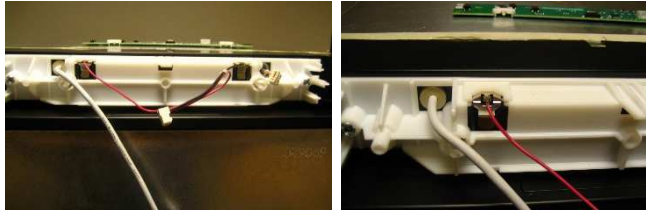
Remove the displayboard by pushing the white knobs together



Repair instruction

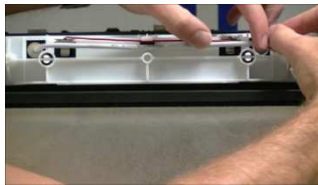
E

Slide the connectors of the battery cable through the technical panel.



F

Make sure the cables are positioned in a proper way



G

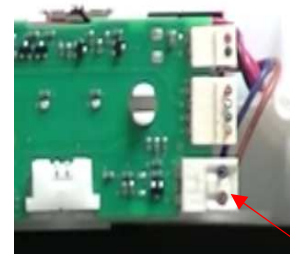
Put back the old displayboard



H

Connect all the connectors to the displayboard

Note: connector that is pointed out is only for models with 2 doors



Repair instruction

I

Follow steps C-B-A to complete the fridge

J

Put the new batterypack with AA batteries in place

Note: don't use rechargeable AA batteries

