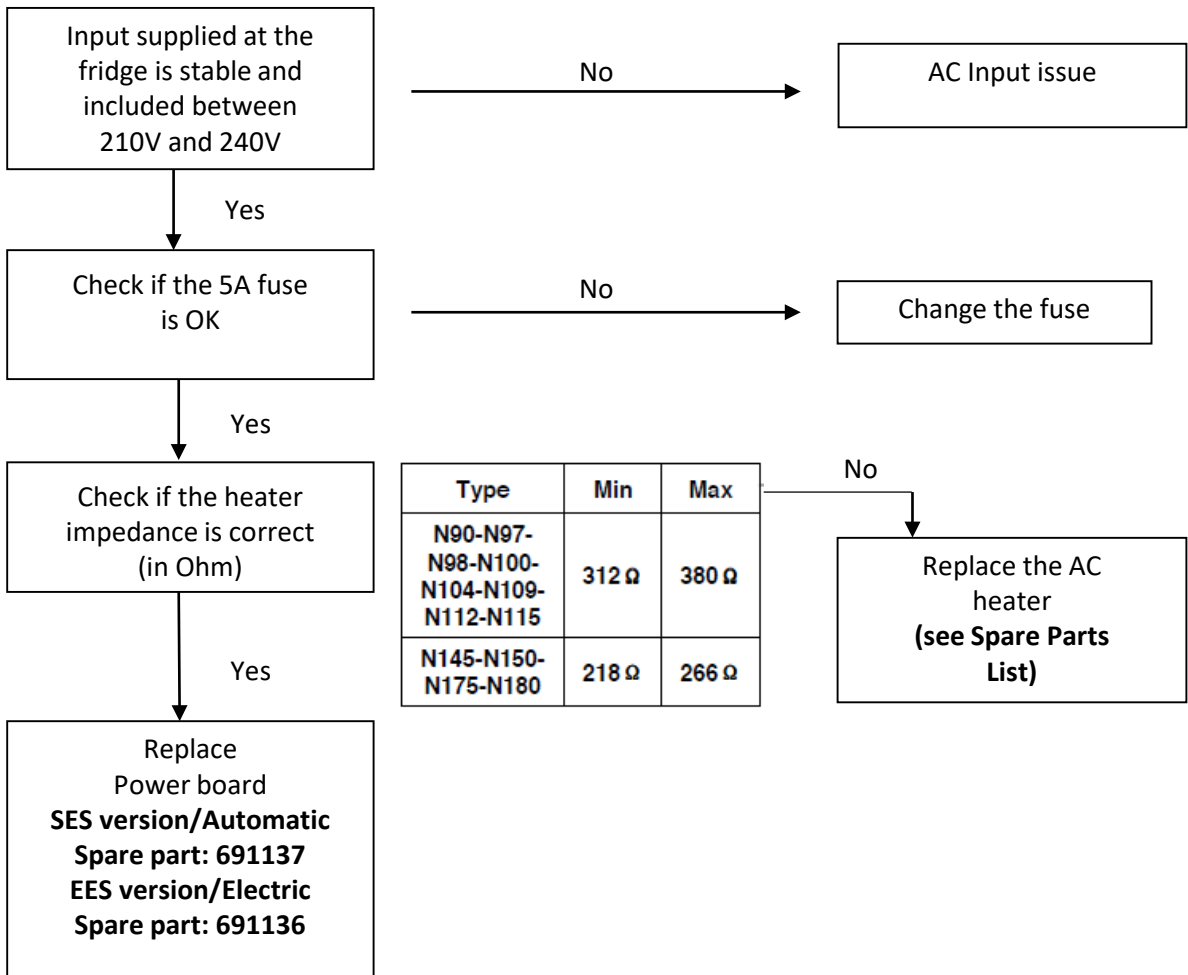


Troubleshooting

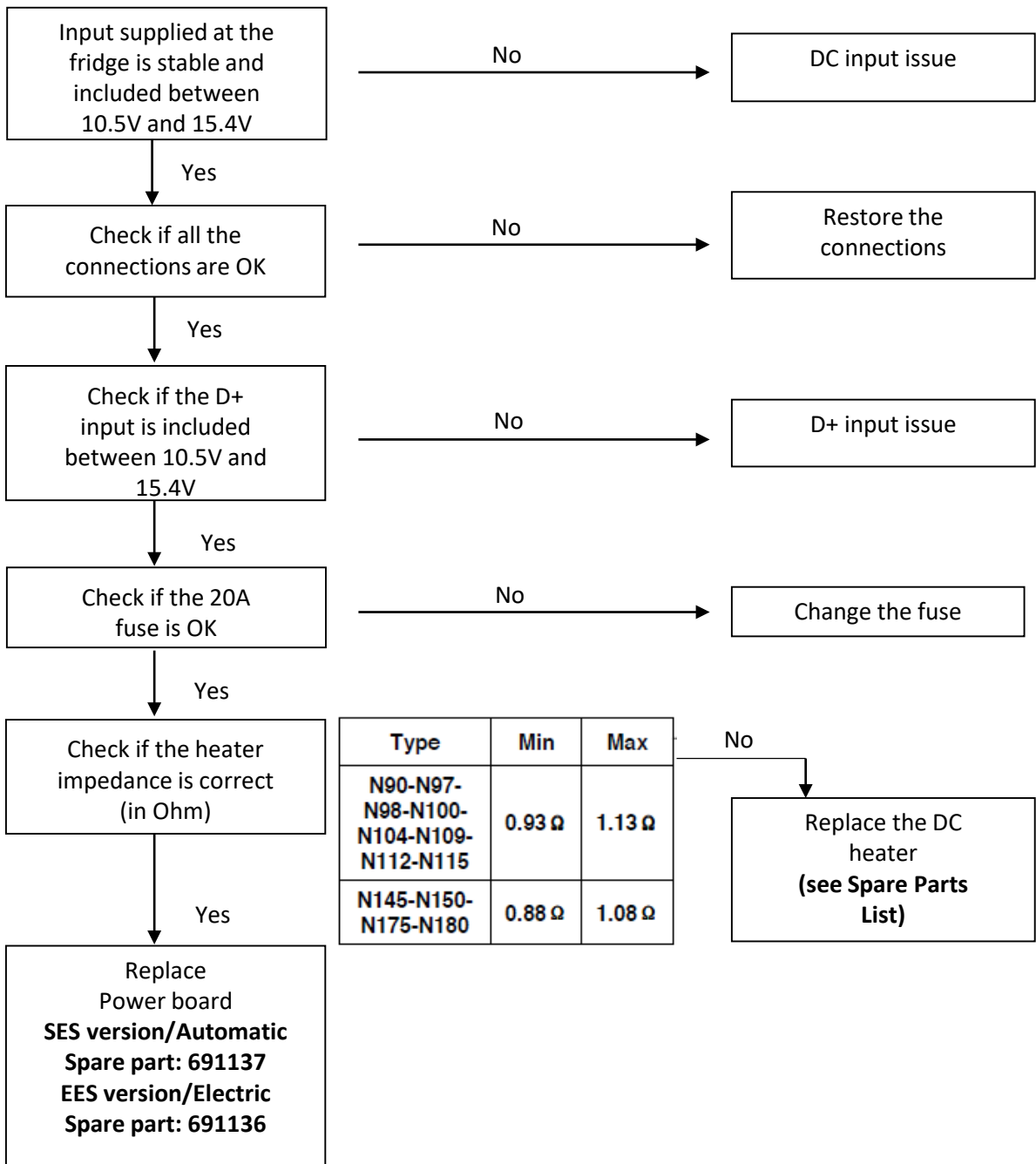
REFRIGERATION
 ABSORPTION REFRIGERATORS
 Premium LCD line

ERROR CODE 1: AC heater current is measured to be 75% below nominal current



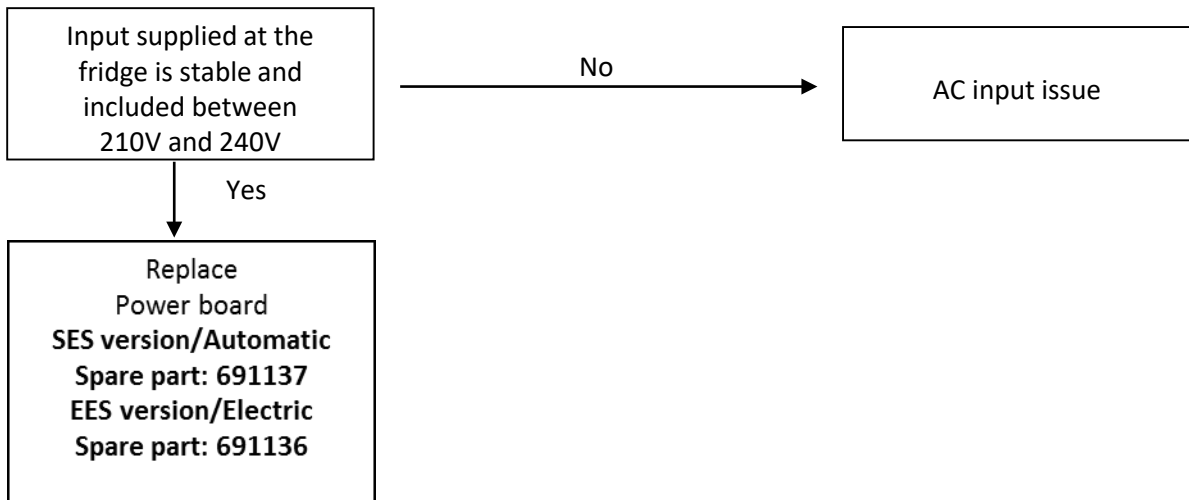
Troubleshooting

ERROR CODE 2: DC heater current is measured to be 75% below nominal current

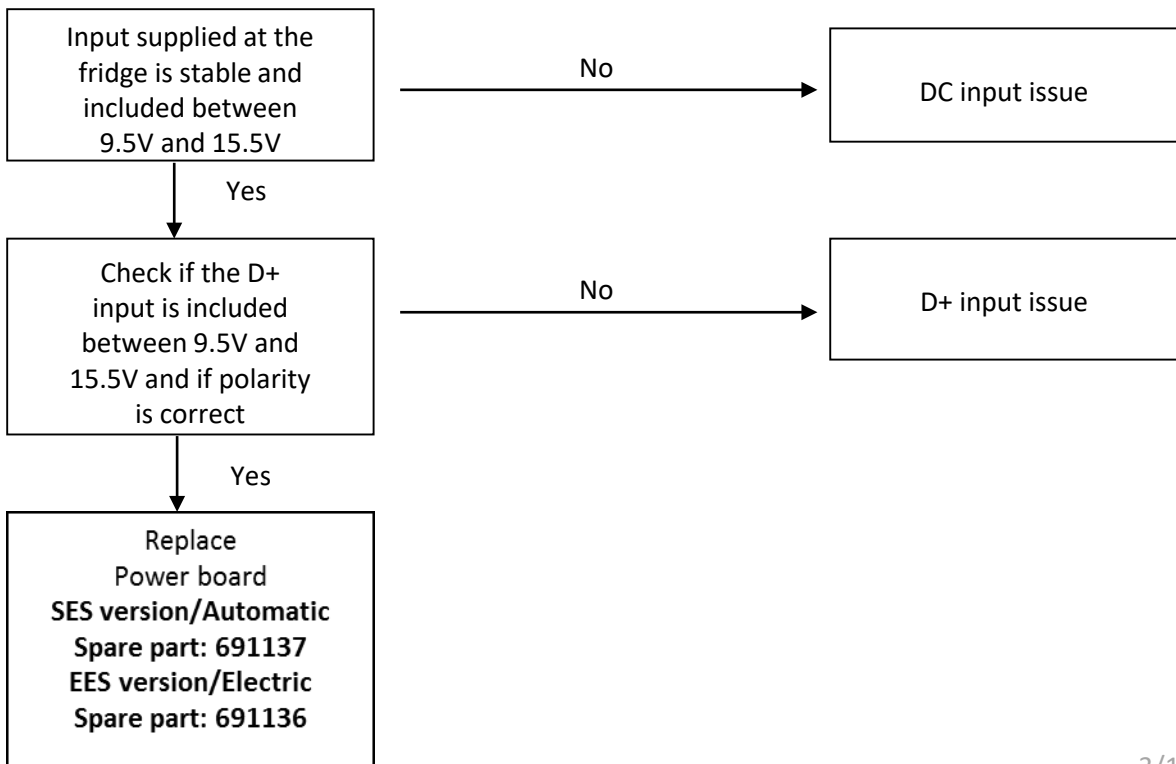


Troubleshooting

ERROR CODE 3: AC heater is ON when it should be OFF

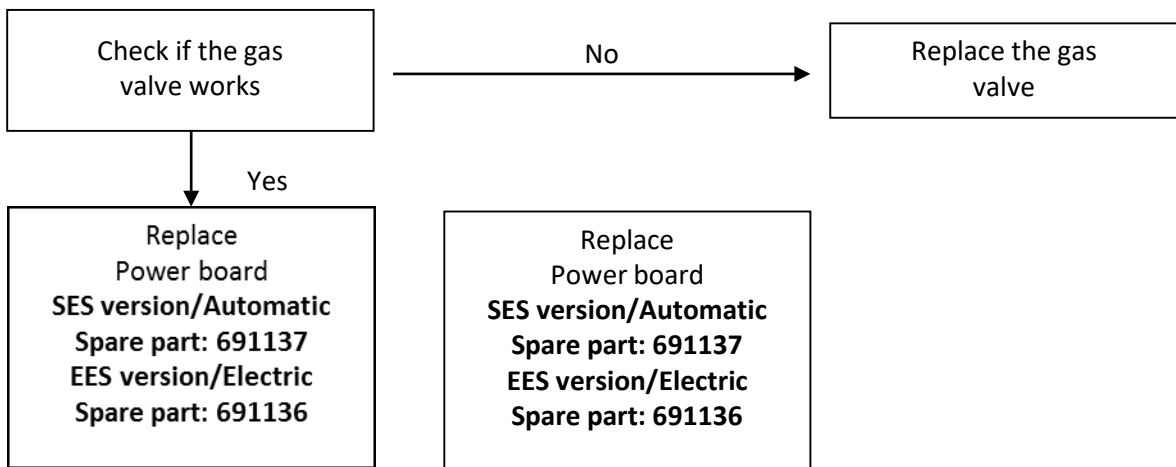


ERROR CODE 4: DC heater is ON when it should be OFF



Troubleshooting

ERROR CODE 5: Senses flame when gas should be OFF



ERROR CODE 6: Senses gas output terminal ON when should be OFF

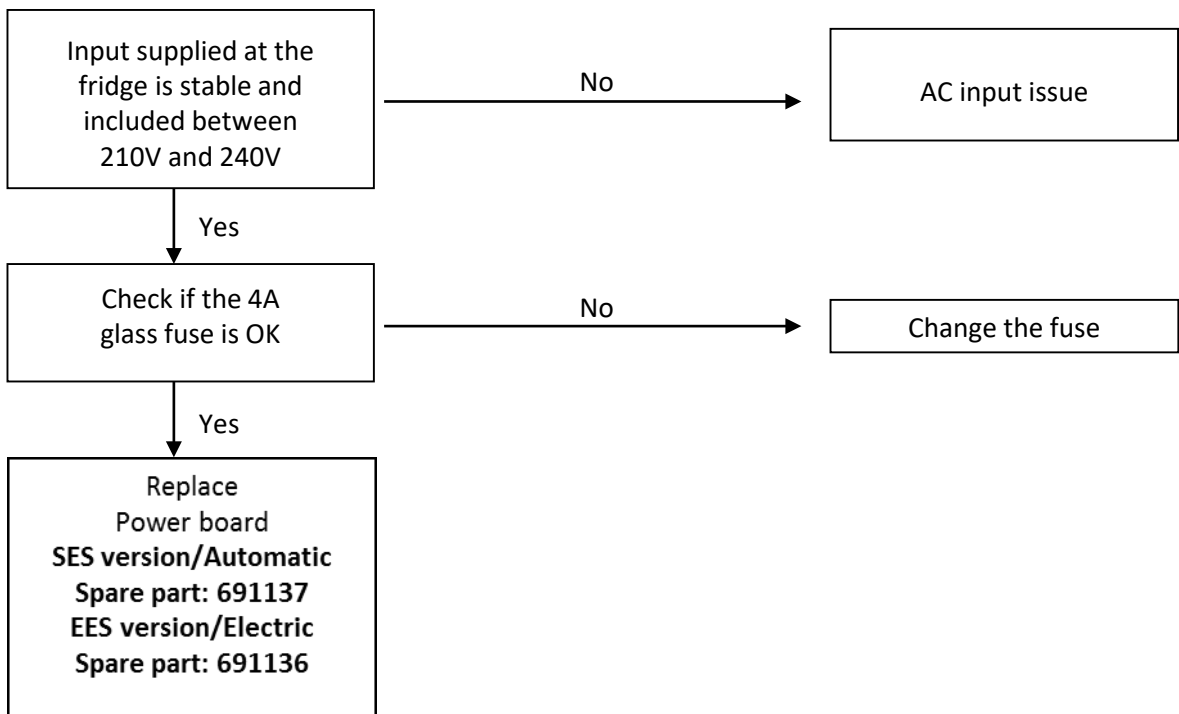
Replace Power board: **SES version/Automatic Spare part: 691137**
 EES version/Electric Spare part: 691136

ERROR CODE 7: Senses gas output terminal OFF when should be ON

Replace Power board: **SES version/Automatic Spare part: 691137**
 EES version/Electric Spare part: 691136

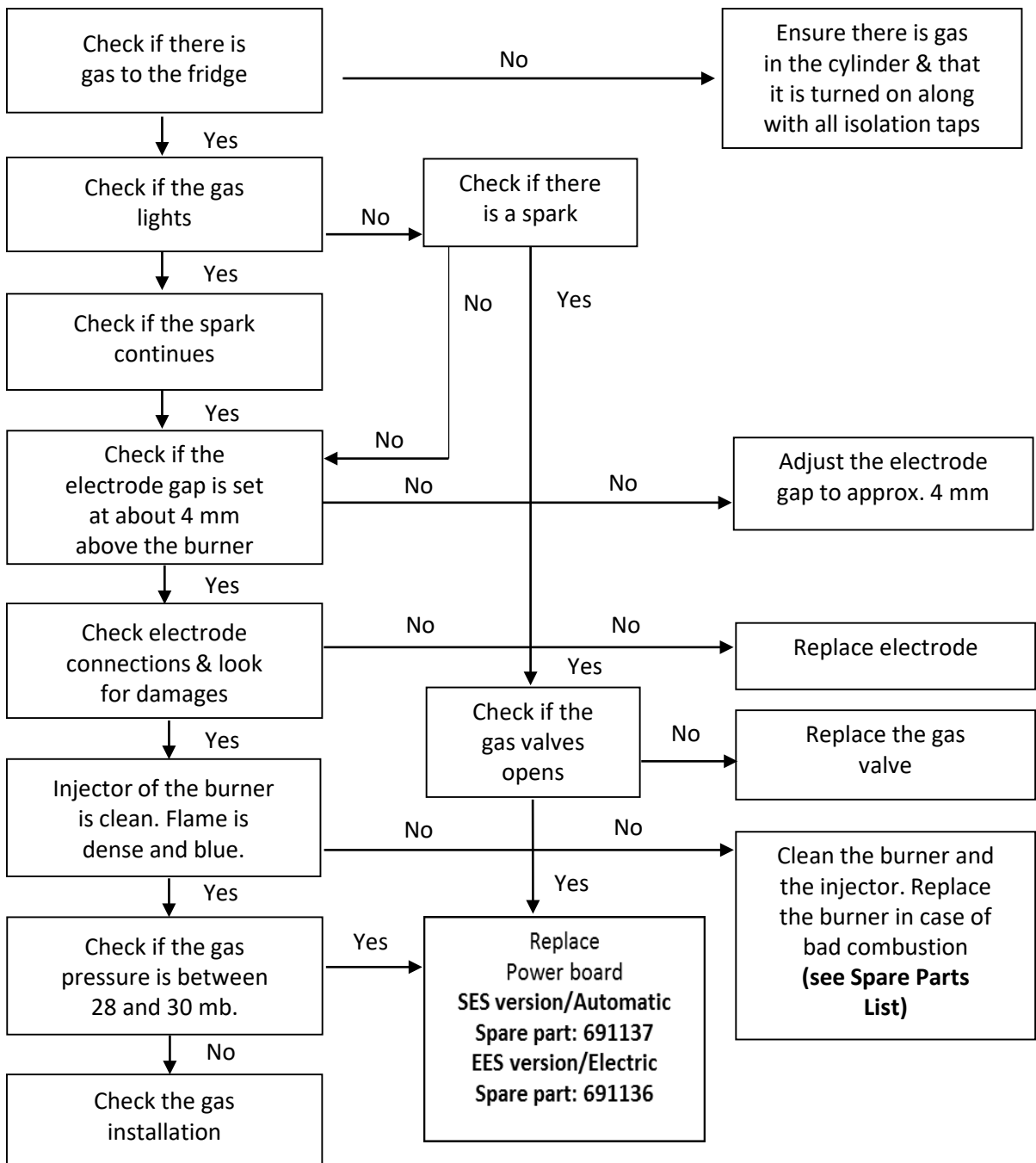
Troubleshooting

ERROR CODE 8: AC mains supply is below 20% nominal



Troubleshooting

ERROR CODE 9: Gas lockout because flame fails to ignite after 30 seconds

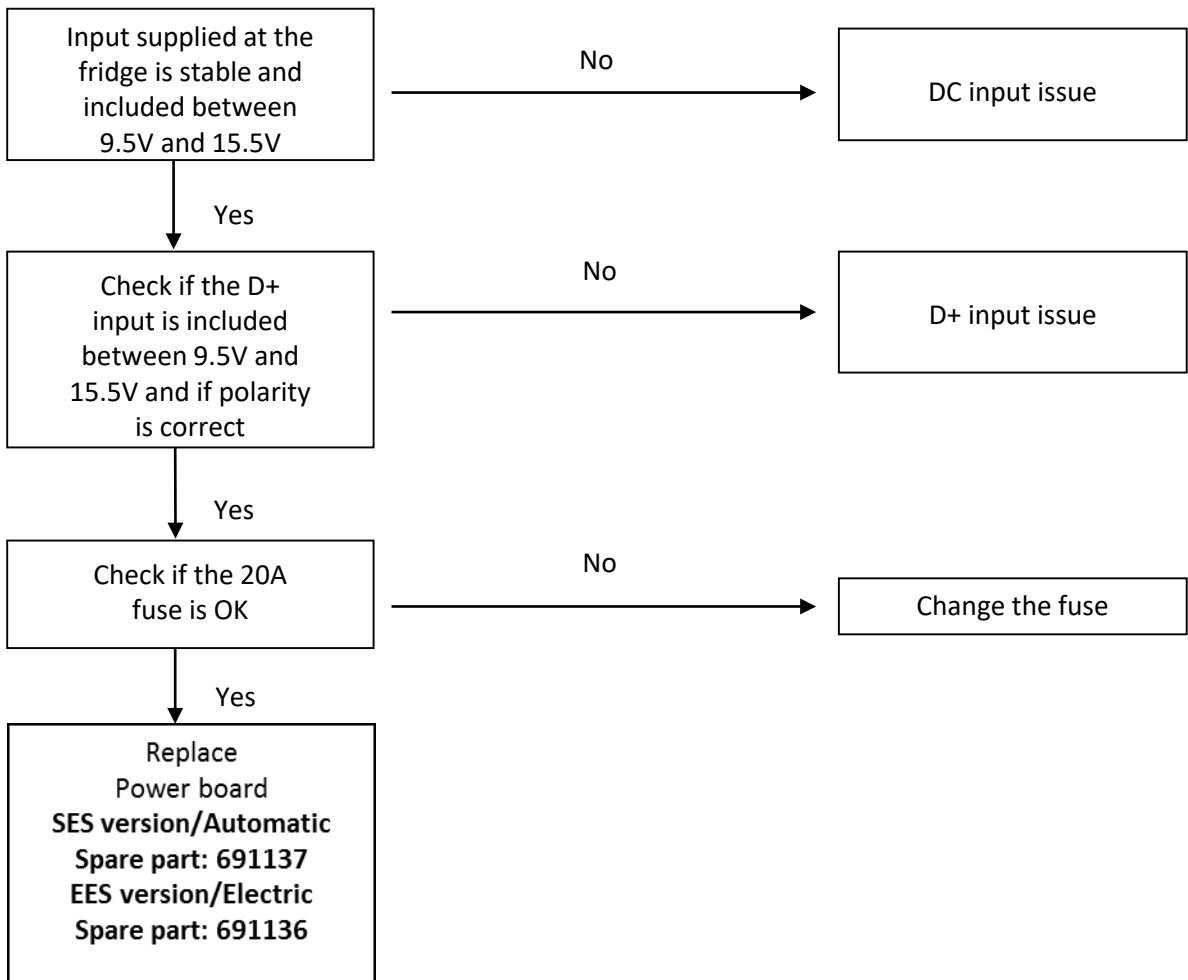


Troubleshooting

ERROR CODE 10: “No engine running” signal is present and control is in Manual DC mode



To know if D+ polarity is good, select manually DC mode engine off.
If no error code occurs, that means the D+ input is versed.
Ensure power supply is capable to supply correct amperage.

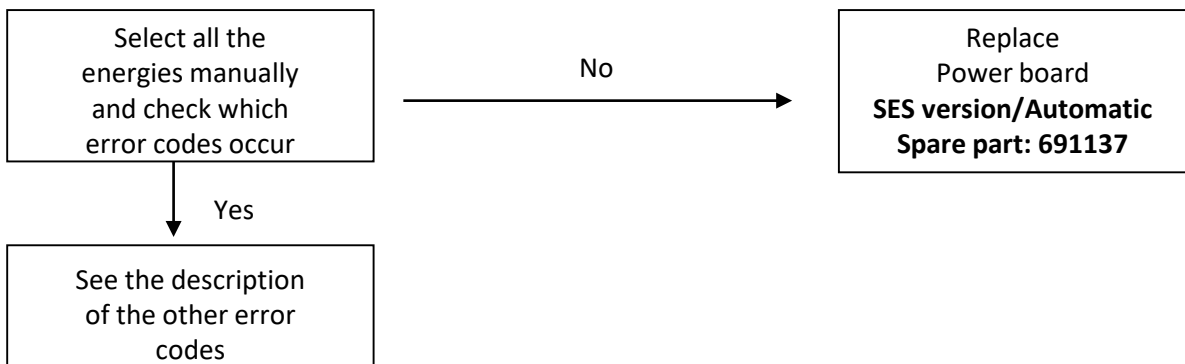


Troubleshooting

ERROR CODE 11: No energy source is available and control is on AUTO mode



Please make sure that all energy sources are available during the trial

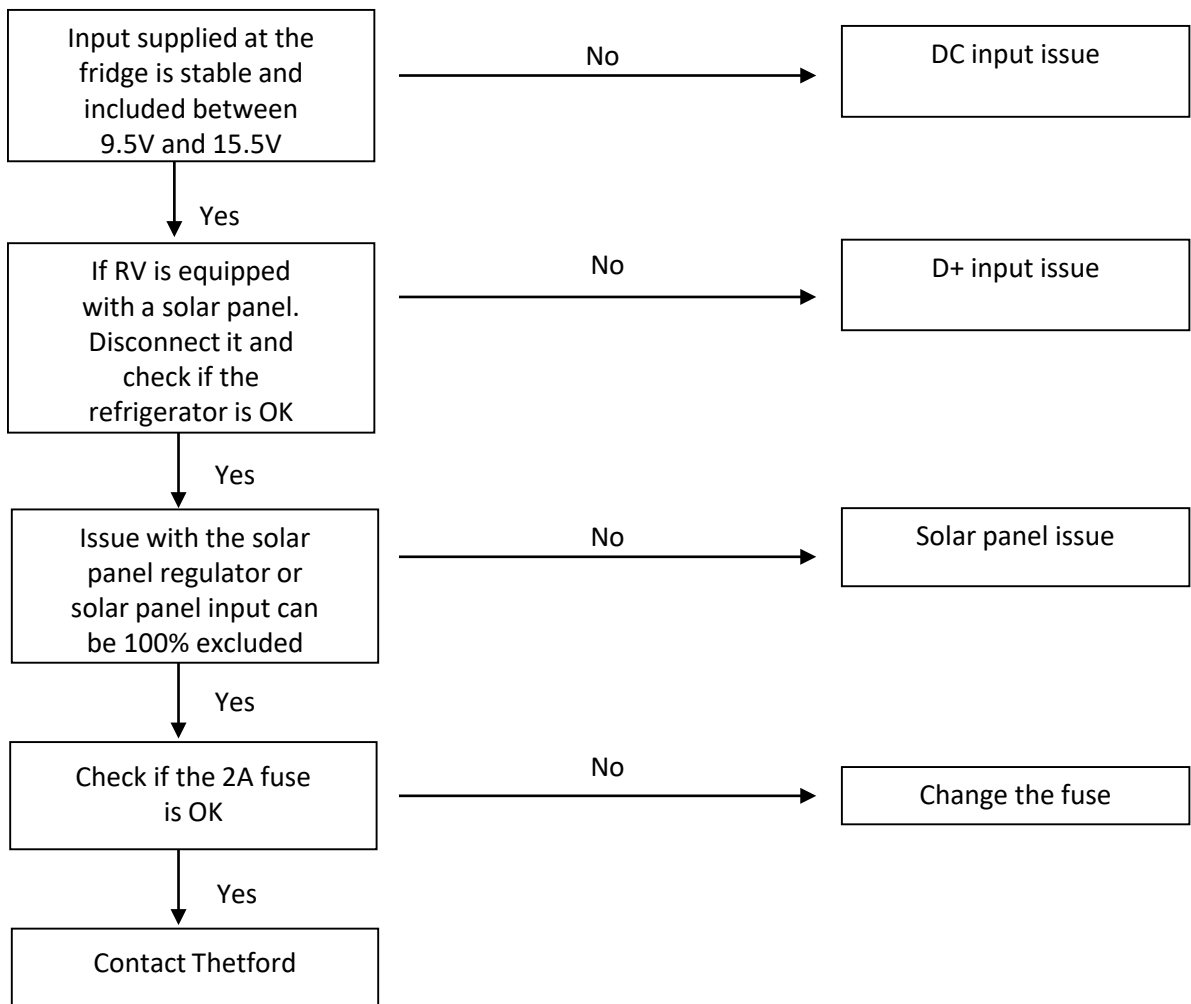


Troubleshooting

ERROR CODE 12: Supply voltage DC is out of range (9.5V 15.5V)

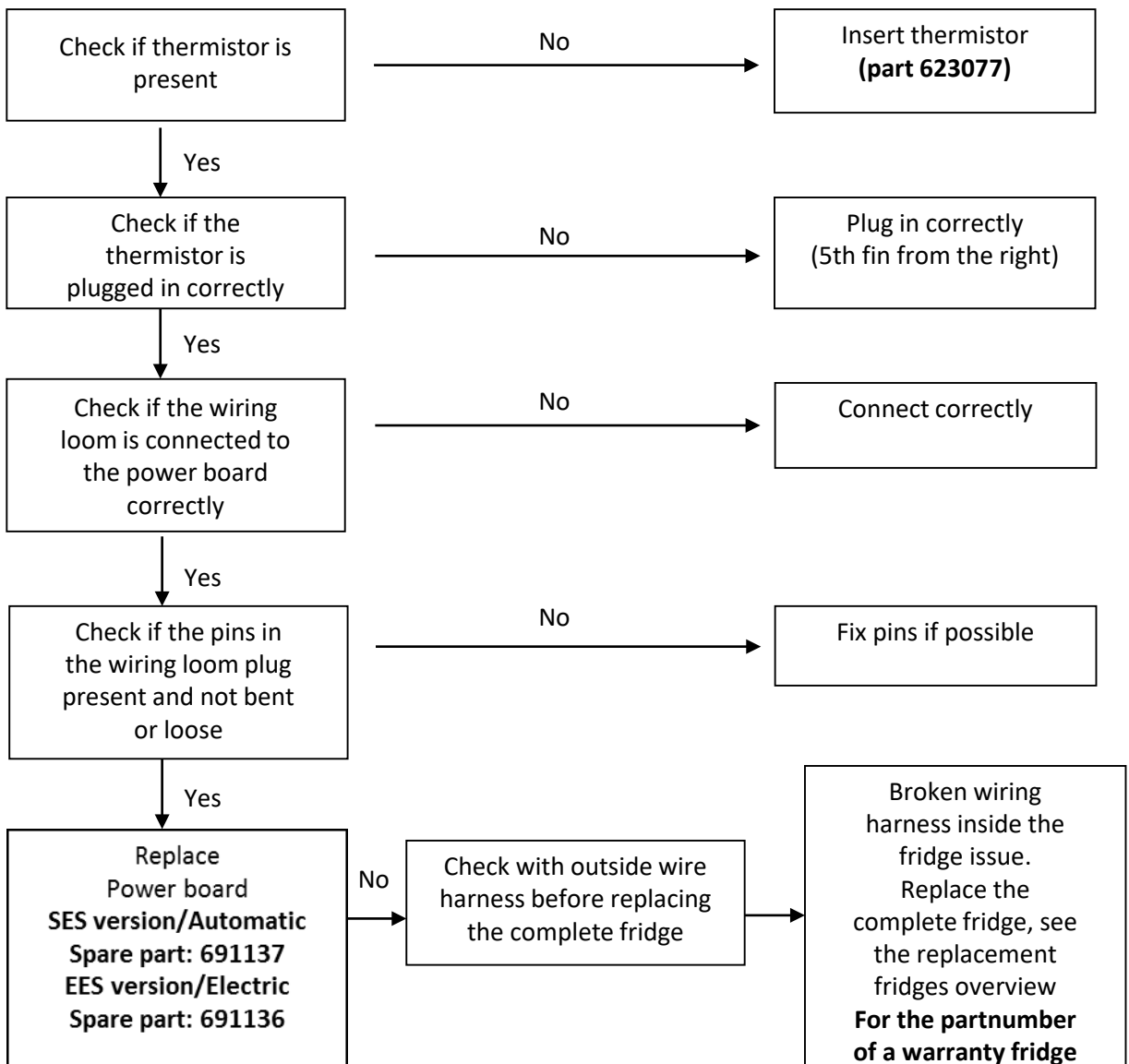


If DC mode have been selected manually, the refrigerator is not switching automatically on another source of energy when the engine is off



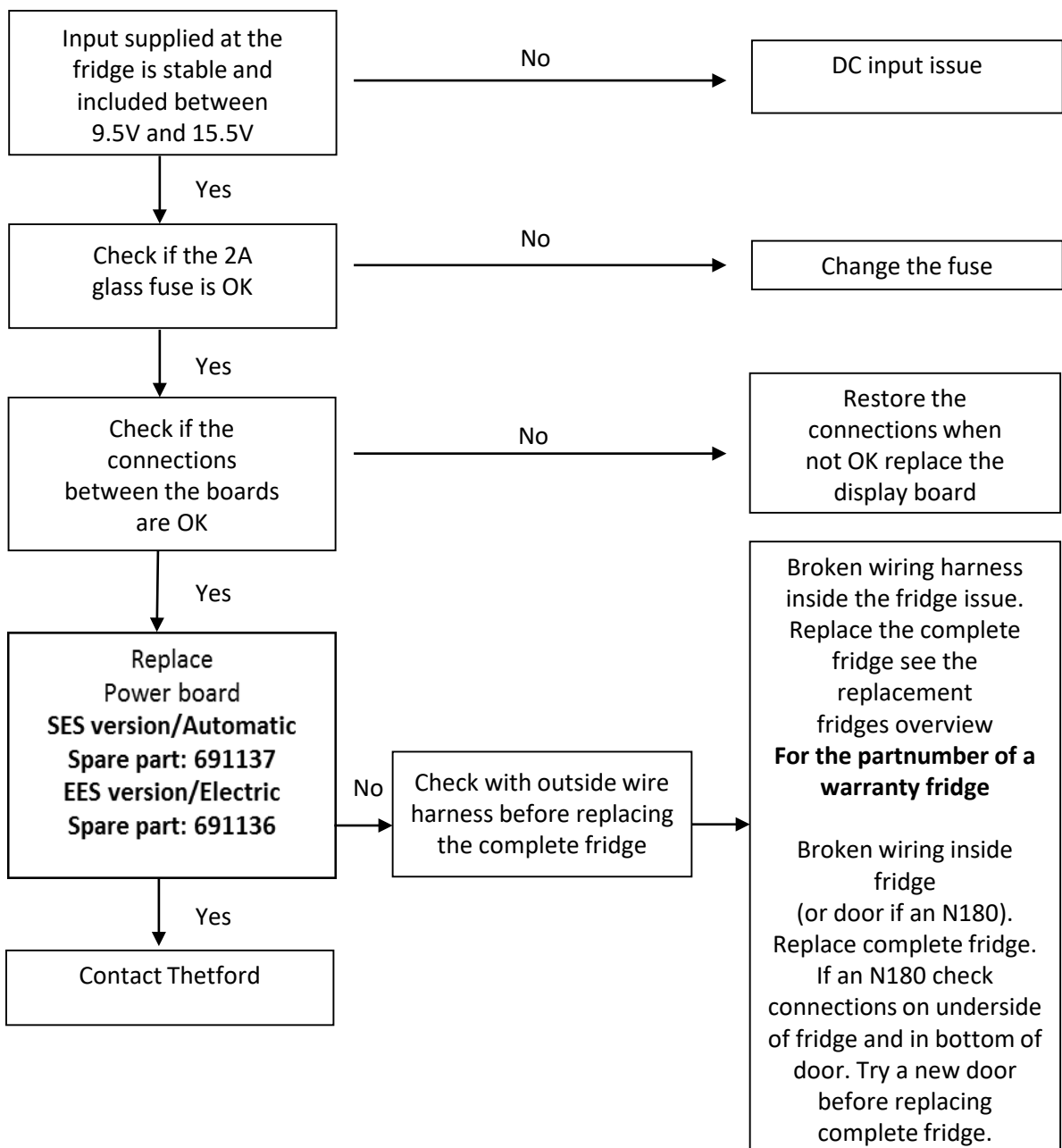
Troubleshooting

ERROR CODE 13: Thermistor fails, control automatically switches to backup mode (BOS)



Troubleshooting

ERROR CODE 14: Display board and power board lost communication to each other



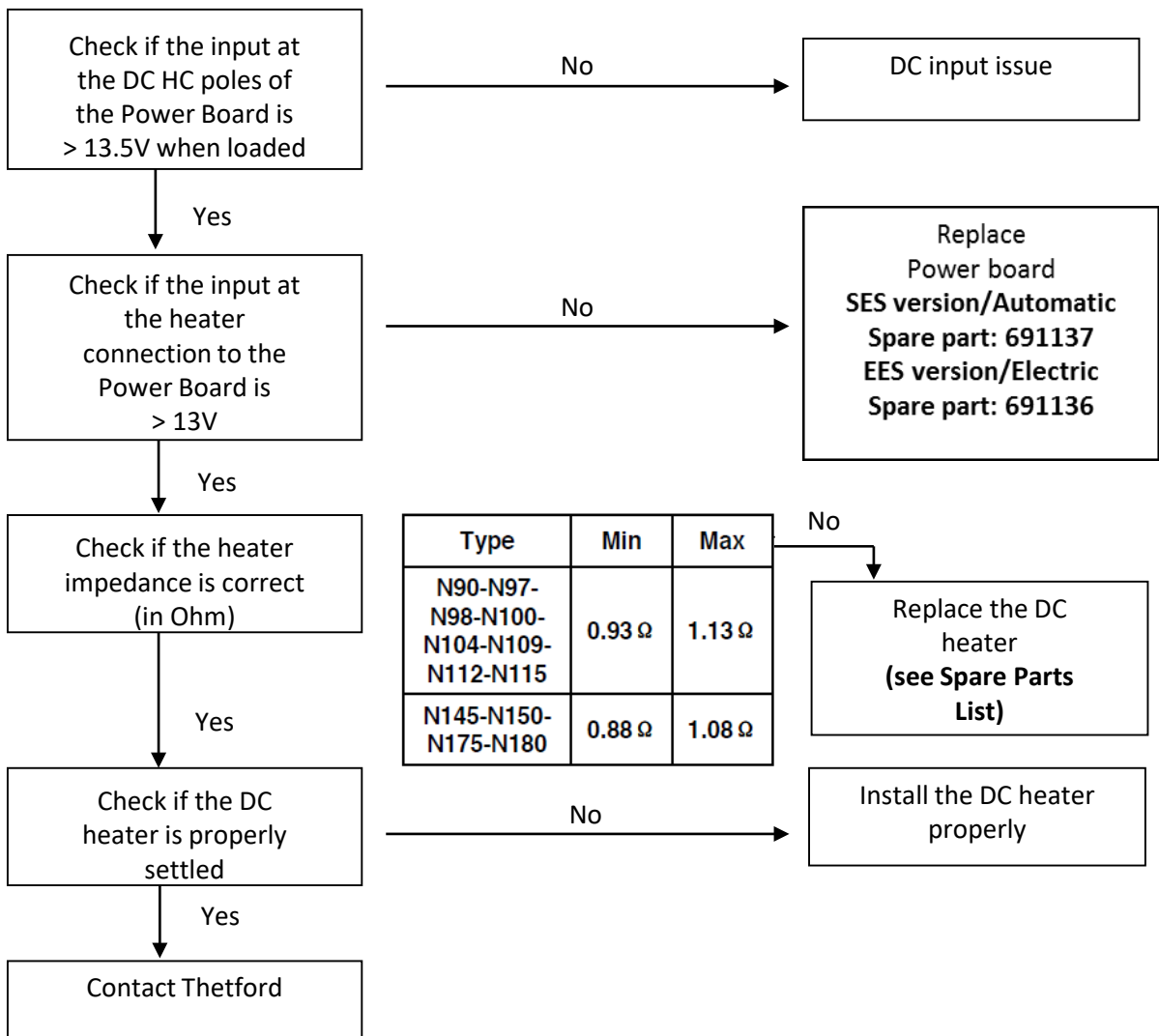
Troubleshooting

Lack of performance; No error code

➤ On 12 Volts



Do the testing of the fridges on the manual mode



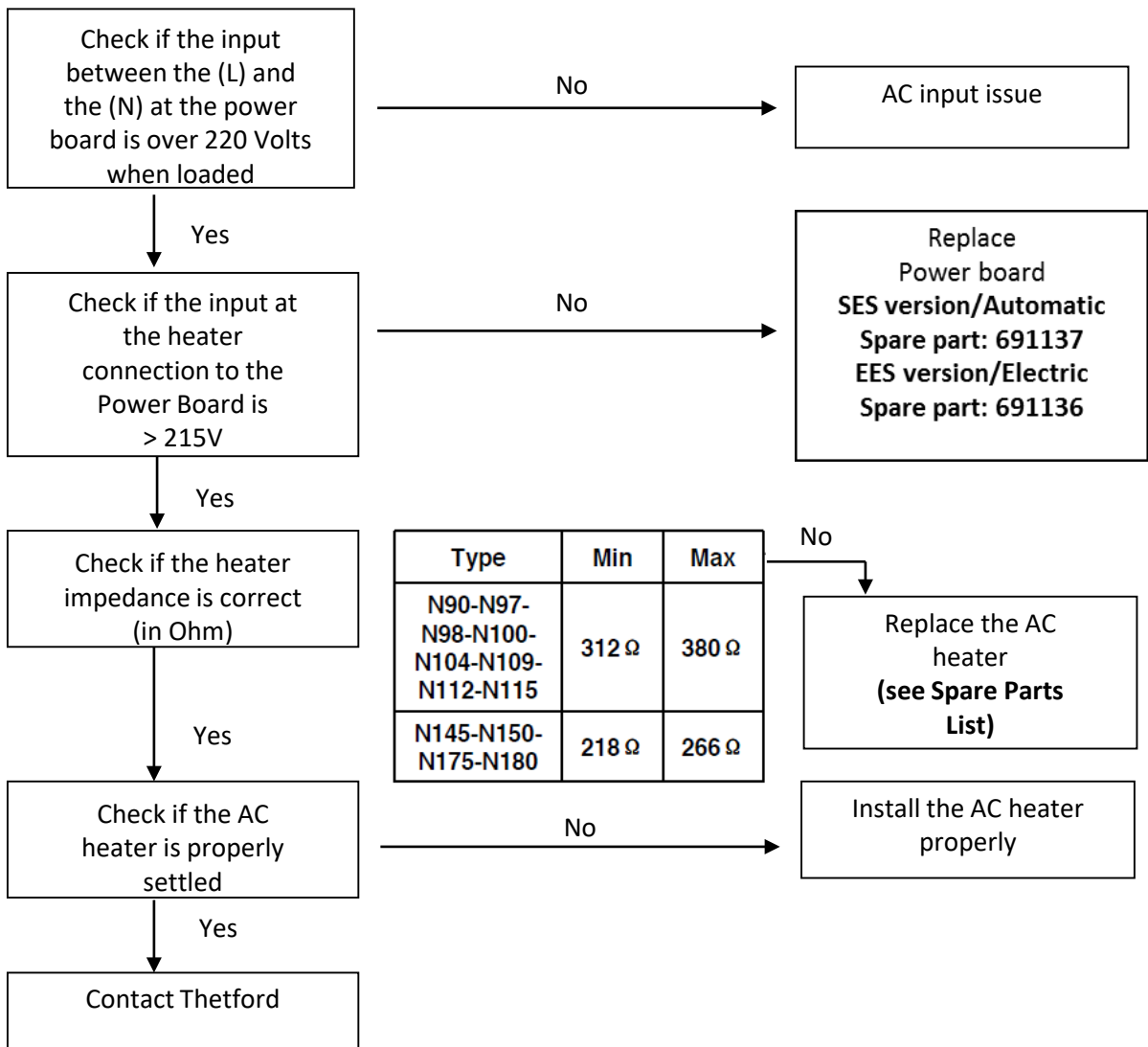
Troubleshooting

Lack of performance; No error code

➤ On 230 Volts



Do the testing of the fridges on the manual mode



Troubleshooting

Lack of performance; No error code

➤ On Gas



Do the testing of the fridges on the manual mode

